



since 1987

# *Hologram Transfer Machine or Hologram Applicator Machine*

## **HLHTM-30A/50A**

**New**



**New**



**Specially Designed For Aluminum Foil with VMCH Coating, etc**



# **MAAN MACHINE TOOLS**

These Machines are designed to transfer the Embossed Holographic material to the material to be used / required. i.e. on paper, aluminum foil, polyester or as per customer requirement in roll to roll form.



since 1987

# HLHTM-30A/50A

**Specially Designed For Aluminum Foil with VMCH Coating, etc**

Some Samples



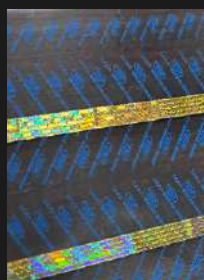
On Bidi Paper



On Blister film



On Aluminum foil



On polyester



On Lami Tube



1mm For cigrette

## Technical Specification

**NO LUBRICATION** is required. Best Suitable for Pharmaceuticals and Hygienic requirements.

Model	HLHTM-30A	HLHTM-50A
Max. Unwind Web Width	300mm / 12 Inches	500mm / 20 Inches
Max. Unwind Reel Dia.	600mm / 24 Inches	800mm / 32 Inches
Max. Rewind Reel Dia.	600mm / 24 Inches	800mm / 32 Inches
Hologram Strip Unwind Arms	4 nos	6 nos
Polyester Waste Rewind Arm	4 nos / 1 Single Core	6 nos / 1 Single Core
<b>Silicon Pressure Roll</b>	1 nos	
<b>Chilling System</b>	1 nos (Specially Designed For Aluminum Foil with VMCH Coating)	
Heating Roll	3kw (1 nos)	5kw (1 nos)
Unwind & Rewind Reel Core Inner Dia.	76mm / 3"	76mm / 3"
Drive AC	3hp/2.2kW (1 nos)	5hp/3.75kW (1 nos)
Motor AC (Geared Motor)	3hp/2.2kW Geared Motor	5hp/3.75kW Geared Motor
Speed Max.	70Mtrs/Min (Depend on material)	
Unwind tension	By Pneumatic Brake (Auto Tension Control System Optional & Sold Separately)	
Rewind tension	By Pneumatic Clutch (Auto Tension Control System Optional & Sold Separately)	
Loading	Manually on Pneumatic Core holding System	
Unloading	Air Expandable Shaft (600mmDia) & Drum Winding (300mm Dia.)	
Web Aligner	By Edge Guide System (Make E+L/BST)	
Length Counting	Digital Preset Auto-Cut Length Counting System	
Air Required	8 Bar / 120psi	
Power Requirements	6 kW(Approx) , 415Vac / 3Phase	9 kW(Approx) , 415Vac / 3Phase
Dimensions (in INCHES)	L-85 x W-55 x H-55	L-102 x W-75 x H-55

**Water Chiller for machine not included with machine Buyer has to purchase separately**

Note : Specifications and features are subject to change without notice.

\*approximate speed depending upon coating & material.



# MAAN MACHINE TOOLS

119, Krishna Vihar, Nawlu Colony, Near Metro Station, Ballabhgarh-04, Faridabad (Haryana)

Ph.: 0129- 2240123, 9810204678 Cell : +91- 9810262166, +91- 9871175777

E-mail : info@maanmachinetools.com, Website : maanmachinetools.com

skype : k.s.maana





# *Slitting Machine*

## **SM-30/80/100/120**



▲  
**MAAN MACHINE TOOLS**



Slitting is a process in which a coil of material is cut down into a number of smaller coils of narrower measure/width as required. Our slitting machines are specially designed to handle different materials having different thickness variation and fine slitting finish. We use individual clutch system with its rewinding arms to adjust tension of slitted material reels and reduce wastage also.



# Slitting Machine

## SM-30/80/100/120/160

### Technical Specification

**NO LUBRICATION** is required. Best Suitable for Pharmaceuticals and Hygienic required

Model	SM-30	SM-80	SM-100	SM-120
Web Width	300 mm.	800 mm.	1000 mm / 40”	1200 mm / 47”
Unwind Max. Dia.	500mm.	750mm.	750mm / 30”	1000mm / 40”
Rewind Max. Dia.	300mm.	300mm.	300/450mm	300/450mm
Minimum Slit Width	5mm	24-30mm	35-50mm	35-50mm
Slitting operation	Blade/Rotary Cutter extra chargeable (Depend on material, Requireents,etc)			
Individual Arms STANDARD	2 sets	8 sets. (STANDARD)	10 sets. (STANDARD)	12 sets. (STANDARD)
Rewinding System	Surface Winding (Individual Arms)			
Min. Film Thickness	12 micron	12 microns	12 microns	12 microns
Unwind Core Internal Dia.	76mm/3”	76mm (Standard)	76mm/3”	76mm/3”
Rewind Core Internal Dia.	76mm/25mm(Ⓟ)	76mm	76mm/3”	76mm/3”
Max. Speed (Mtrs/Min.)			210 Mtrs/min.	
AC Drive 3Phase	3hp/2.2kw.	5hp / 3.67kW 1 no's	7.5Hp / 5.59kW 1 nos	7.5Hp / 5.5kW 1 nos
AC Motor 3Phase	3hp/2.2kw.	5hp / 3.67kW 1 no'	7.5hp / 5.59kW 1 nos	7.5hp / 5.5kW 1 nos
Trim Blower	1/2 hp	1/2hp / 0.45kW	1hp / 0.45kW	1hp / 0.75kW 1 nos
Loading / Unloading	Manually by Pneumatic Cylinder	Manually on Pneumatic expandable shafts / manually by individual arms Set		
Unwinding tension	Manually by using Pneumatic Brake.(Make MMT)			
Rewinding tension	Manually by using Clutch on Arms (MMT)			
Free Margin Control	By using web Edge Guide System / web Line Guide System (Make E+L/BST)			(Extra chargeable)
Length Counting System	By using Digital Preset Auto-Cut length Counting System			
Compressed Air Required.	6-8 Bar			
Power Requirements	415V AC 3Phase (2.75 Kw)	415V AC 3Phase (2.75 Kw)	415V AC 3Phase (7 kW)	415V AC 3Phase (7.00 kW)
Dimensions (inches)	53" x 60" x 57"	58" x 77" x 58"	65" x 90" x 56"	

Note : Specifications and features are subject to change without notice.

Ⓢ = extra price will be charg for these



## Core Cutting Machine

50 to 150 mm Dia (50, 75, 100, 125, & 150 mm  $\phi$ )  
Core Cutter is a Versatile & compact machine.  
Its cuts core at very high speed within a variation of  $\pm 0.5$  mm  
Suitable for Plastic Core, Paper Core, Aluminum Core etc.



# MAAN MACHINE TOOLS

119, Krishna Vihar, Nawlu Colony, Near Metro Station, Ballabhgarh-04, Faridabad (Haryana)

Ph.: 0129- 2240123, 9810204678 Cell : +91- 9810262166, +91- 9871175777

E-mail : info@maanmachinetools.com, Website : maanmachinetools.com

skype : k.s.maan



DUNS No. 91-602-2213





# *Electro-Forming Tanks* **ST & HT**



**SOFT Tank: (Standard System)**



**HARD Tank: ( Rotary System )**

No need of Profile systems used in old electroforming Tanks  
Equipped with Thickness Control System.

## Electro-Forming Tanks used in HOLOGRAPHY industry for:



since 1987



### Electro-Forming Tanks ST & HT

- **Soft Tank (ST)** is used to produce Copies/Soft Shims from original masters to make it safer and extend usage of master design life for long run and safety against damage in Production of master.
- **Hard Tank (HT)** is used to produce Shim/Printing plates used to produced hologram on Hard/Soft Embossing machine.

#### Note : Benefit of our ROTARY HARD TANK:

Two shims in 90 mins.

No issue of Profile management in tank.

Require less Chemical so its regular maintainence is very less.

Geared Motor used for rotary system.

Rectifier is well equipped with all necessary safety features.

## No need of Profile systems used in old electroforming Tanks Equipped with Thickness Control System.

### TECHNICAL SPECIFICATIONS:

#### HARD Tank: ( Rotary System )

Rectifier 50A/12VDC : 1 Nos.

(Equipped with Thickness control system & Ph meter)

Filter unit with Magnetic Pump : 1 Nos.

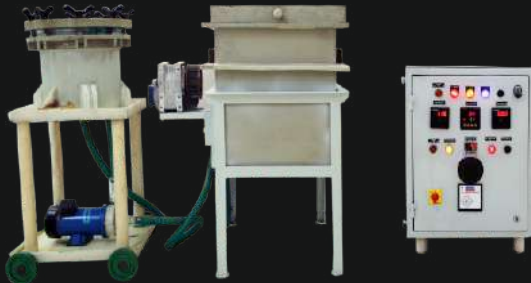
Heater 2kW x 2 nos

Production Capacity : 2 Shims/90 mints(Approx.)

Power Consumption : 6 kW (Approx)

Dimensions : 75" x 40" x 40" (inches)

**Specially for  
Hard Embossing Machine**



#### SOFT Tank: (Normal System)

Rectifier 50A/12VDC : 1 Nos.

(Equipped with Thickness control system & Ph meter)

Filter unit with Magnetic Pump : 1 Nos.

Heater 2kW x 2 nos

Production Capacity : 1 master copy / 2-4 hrs

Master Copy / Copy to Copy. (Depend on Thickness)

(Depend on thickness of copy required.)

Power Consumption : 6 kW (Approx)

Dimensions : 75" x 40" x 40" (inches)



Note : Specifications and features are subject to change without notice.

\*production time ,etc depends on thickness of output required and chemical used.



# MAAN MACHINE TOOLS

I 19, Krishna Vihar, Nawlu Colony, Near Metro Station, Ballabhgarh-04, Faridabad (Haryana)

Ph.: 0129- 2240123, 9810204678 Cell : +91- 9810262166, +91- 9871175777

E-mail : [info@maanmachinetools.com](mailto:info@maanmachinetools.com), Website : [maanmachinetools.com](http://maanmachinetools.com)

skype : k.s.maan





since 1987

# *Hologram Transfer Machine or Hologram Applicator Machine*

**HLHTM-30/50/100**



**New**



**MAAN MACHINE TOOLS**



These Machines are designed to transfer the Embossed Holographic material to the material to be used / required. i.e. on paper, aluminum foil, polyester or as per customer requirement in roll to roll form.



since 1987

## HLHTM-30/50/100

### Some Samples



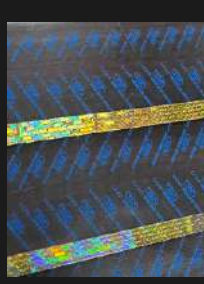
On Bidi Paper



On Blister film



On Aluminum foil



On polyester



On Lami Tube



1mm For cigarette

## Technical Specification

**NO LUBRICATION** is required. Best Suitable for Pharmaceuticals and Hygienic requirements.

Model	HLHTM-30	HLHTM-50	HLHTM-100
Max. Unwind Web Width	300 mm / 12".	500 mm. / 20"	1000 mm. / 40"
Max. Unwind Reel Dia.	600 mm. / 24"	600 mm. / 24"	800 mm. / 31"
Max. Rewind Reel Dia.	600 mm. / 24"	600 mm. / 24"	800 mm. / 31"
Hologram Unwind Arms	4 nos	8 nos	1 nos(16 reels)
Polyester Waste Rewind Arms	4 nos	1 nos	1 nos
Silicon Pressure Roll	1	1	1
Heating Roll	1 x 3kW	1 x 5Kw	1 x 6kW
Unwind & RewindReel Core Inner Dia.	76 mm / 3"	76 mm / 3"	76 mm / 3"
Drive AC	5hp x 1nos	5hp x 1nos	3hp x 2 nos
Motor AC (Geared Motor)	5hp Geared Motor / 1 nos	5hp Geared Motor x 1 nos	3hp Geared Motor x 2 nos
Speed Max.	70m/Min. (Depend On Material)		
Unwind tension	Manually by using Pneumatic Brake System		
Rewind tension	by using Mechanical Clutch System	Manually by using Pneumatic Clutch System	
Loading	Manually by using Pneumatic core holding system		Manually on Pneumatic Expendable Shafts
Unloading	Manually on Core Holding System		Manually on Pneumatic Expendable Shafts
Web Aligner	Digital Preset Auto-Cut length Counting System		
Length Counting	By Using Edge Guide System or*Line Guide System (make E+L/BST)		
Air Required	8-10 Bars		
Power Requirements	6.72kW(approx)	9kW(approx)	13.5kW(approx)
Dimensions (in INCHES)	55" x 54" x 54"	102" x 74" x 54"	

Note : Specifications and features are subject to change without notice.

\*approximate speed depending upon coating & material.



# MAAN MACHINE TOOLS

119, Krishna Vihar, Nawlu Colony, Near Metro Station, Ballabhgarh-04, Faridabad (Haryana)

Ph.: 0129- 2240123, 9810204678 Cell : +91- 9810262166, +91- 9871175777

E-mail : [info@maanmachinetools.com](mailto:info@maanmachinetools.com), Website : [maanmachinetools.com](http://maanmachinetools.com)

skype : k.s.maana



DUNS No. 91-602-2213



since 1987

# *Coating & Lamination* Machine

**CLM-30S**



▲  
**MAAN MACHINE TOOLS**



since 1987

# Coating & Lamination Machine

## CLM-30S

A very compact machine in market which performs 3 type of coating (ref. technical specifications). It Requires less space, less electrical load & fast output thus saving money

### Technical Specification

Model	CLM-30S
Pay off width	: 300 mm.
Max. Unwind Dia.	: 400mm.
Max. Rewind Dia.	: 400mm.
Substrates to be coated	: Polyester film, stamping foil, Paper, etc.
Thickness of substrate	: 16-150 micron.
Speed	: *30-35mtrs/Min (solvent Base).
(Depend upon Material & Coating)	: *8-10mtrs/Min (Water Base)
	: *30-40mtrs/Min (solvent Base)
Heating Roll (Hotmelt)	: 1
Heating Roll Heater (Hotmelt)	: 1 No./ 3 Kw.
Tray Heater (Hotmelt)	: 1 No./ 5 Kw.
Chamber Heaters (Water Base & Solvent)	: 1 Kw x 09/12 Nos.
Air Blower	: 0.5 hp x 2 Nos.
Unwind Core Dia.	: 76mm ID
Rewind Core Dia.	: 76mm ID
Chilling roll	: 1 (Chiller Purchase Separately)
Motor	: 2 Hp / 1.5 kW Geared Motor (1nos).
Drive	: 2 Hp / 1.5 kW AC drive.
Unwind tension	: Manually by using pneumatic clutch system (Make MMT)
Rewind tension	: Manually by using pneumatic brake system (Make MMT)
Length Counting & Control System	: By using user friendly HMI (TOUCH Panel with PLC control)
Web guiding system	: Web edge alignment system (E+L/BST)
Air Required	: 6-8 bar.
Power Requirement	: 415VAC, 10kw. (approx.)
Machine Dimensions (LxWxH)	: (102" x 50 x 98") these dimensions are in INCHES.
Weight (kg)	: 1000kg + 300Kg

Note : Specifications and features are subject to change without notice.  
\*approximate speed depending upon coating & material.

**NO LUBRICATION is required in our All Machines.**

**Coating Possibilities : Water Base, Solvent Base, Heat Seal, etc.**



# MAAN MACHINE TOOLS

I 19, Krishna Vihar, Nawlu Colony, Near Metro Station, Ballabhgarh-04, Faridabad (Haryana)

Ph.: 0129- 2240123, 9810204678 Cell : +91- 9810262166, +91- 9871175777

E-mail : info@maanmachinetools.com, Website : maanmachinetools.com

skype : k.s.maan







since 1987

# *Narrow-Web Hologram Embossing Machine*

**NWH-30A**



**MAAN MACHINE TOOLS**

The Machine produces Hologram required for Counterfeiting / Security Printing Hologram Lables / Narrow Web Hologram Film etc.

2D / 3D Hologram to E-beam Hologram embossing can also be done depending upon Masters



since 1987

## Narrow-web Hologram Embossing Machine

NWH-30A

Samples



### Technical Specification

Model	NWH-30A
Max. Print area	250 mm.
Max. Unwind Diameter	300 mm.
Max. Rewind Diameter	300 mm.
Substrates to be print	Polyester etc.
Thickness of substrate	16 micron to 150 micron.
Speed Max.	50 Mtrs / min
Suggested speed	<b>15 Mtrs / min.</b> (for Best Quality Embossing).
Heater	2 kW x 3 nos.
AC Drive	2 Hp / 1.5 kW (1nos).
Motor	1 Hp / 0.75 kW Geared Motor, 0.118 kW Geared Motor(1 nos. each)
winding Tension	AUTO TENSION Control System with Magnetic clutch. (Make E+L,Etc).
Unwinding Roll	AUTO TENSION Control System with Magnetic brake. (Make E+L,Etc).
Counting System	By using PLC (having both option of SHEET/METER counting).
Control System	By using user friendly TOUCH Panel with PLC control.
Web Guiding System	Web-Edge Guiding System (Make E+L,Etc).
Embossing Pressure Digital	Embossing Pressure is digitally controlled.
Panel Margin Adjustment	Motorized with fine adjustment.
Air Requirements	6-8 Bar.
Power Requirements	415V AC 3 phase (7.00 kW)
Machine Dimensions (LxWxH)	(71" x 36" x 61") these dimensions are in INCHES.
Machine Weight (Kg)	930 kgs

Note : Specifications and features are subject to change without notice.

\*On extra charge according to Quantity etc.

**NO LUBRICATION is required in our All Machines.**



# MAAN MACHINE TOOLS

I 19, Krishna Vihar, Nawlu Colony, Near Metro Station, Ballabgarh-04, Faridabad (Haryana)

Ph.: 0129- 2240123, 9810204678 Cell : +91- 9810262166, +91- 9871175777

E-mail : info@maanmachinetools.com, Website : maanmachinetools.com

skype : k.s.maana





# *Slitting Machine*

**SW-100/120**



**MAAN MACHINE TOOLS**





# Slitting Machine

## SW-100/120

### Technical Specification

**NO LUBRICATION** is required.

#### Model- SW-100

- Web Width: 1000 mm / 40"
- Unwind Dia: 1000 mm / 40"
- Rewind Dia: 500 mm
- Min. Slitting Width :
- Min Material thickness :
- **Rewinding System : Differential Technology With Ball Type Quick Locks**
- **Speed : 370 Mtrs / Min.**
- Unwind Core Dia. : 3" (6" optional)
- Rewind Core Dia. : 3"
- Ac Drive Main : 7.5hp / 5.5kW (Make Control Technics)
- Ac Drive Rewind : 5hp / 3.75kW x 2 nos (Make Control Technics)
- Waste Trim Blower : 1 hp / 0.75kW
- Free margin Control : By using web Edge Guide System / web Line Guide System (Make E+L/BST) (**Extra chargeable**)
- Touch Screen Interface for easy Operations
- Touch Screen and PLC by Allen Bradley.
- Unwind Tension Control : Automatic Tension Control Throughout Varying Diameter with Pn
- Rewind Tension Control : Automatic Tension Control Throughout Varying Diameter with Pneumatic Brakes
- Air Requirements : 6-8 Bars.
- Power Requirements : 415Vac 3-Phase ( 13.75kW )
- Weight: Approx 1,900 kgs
- Machine Dimensions (in Inch): 102 (L) x 67 (W) x 65 (H)

*Note : Specifications and features are subject to change without notice.  
\*approximte speed depending upon coating & material.*



## MAAN MACHINE TOOLS

I 19, Krishna Vihar, Nawlu Colony, Near Metro Station, Ballabgarh-04, Faridabad (Haryana)

Ph.: 0129- 2240123, 9810204678 Cell : +91- 9810262166, +91- 9871175777

E-mail : [info@maanmachinetools.com](mailto:info@maanmachinetools.com), Website : [maanmachinetools.com](http://maanmachinetools.com)

skype : k.s.maan





since 1987

# *Flat-Bed Die Cutting* *High Speed* **IDC-320G**



▲  
**MAAN MACHINE TOOLS**



# Flat-Bed Die Cutting High Speed **IDC-320G**

The machine features flat pressing high precision die cutting and computer control of material pulling and slicing, precision tracking and positioning of both sides and longitude of printed marks by three photoelectric eyes as well as completion of die cutting, waste collection, slicing or automatic marking machine roll at a time, suitable for the die cutting of paper adhesive trademarks, Holographic labels, terylene film trademarks and laser counterfeiting trademarks. As the optimal auxiliary equipment of flexographic printing machines, continuous screen-printing machine, relief printing machines and counterfeiting trademark mould press, it is the most ideal machine for various trademark printing factories.

## Technical Specification

### Model- IDC-320G

- Max Web Width: 320 mm
- Max Unwind Dia: 500 mm
- Servo Motor / Drive / PLC / Inverter / Touch Screen of French Schneider brand
- 2 Taiwanese Edge Sensors for web guiding
- 2nd Pass: German Scanning Sensor for repeat pass operation
- Precision: +/- 0.10 mm
- Single Station Flat Bed Die-cutting
- Top to Bottom bed movement
- Min Repeat: 20 mm
- Max Repeat: 300 mm
- Max Die-cutting Area: 300 x 300 mm
- Die-Cutting Speed: 120~15,000 impressions / hour
- Waste Rewind
- Sheeter
- Max Rewind Dia: 480 mm
- 220V, 50Hz, Single Phase
- Power: Approx 4.0 kw
- Machine Dimensions (in mm): 2750 (L) x 1210 (W) x 1760 (H) mm
- Weight 1800 kgs (Approx)

Make Chinese

Note : Specifications and features are subject to change without notice.

\*approximte speed depending upon coating & material.



# MAAN MACHINE TOOLS

I 19, Krishna Vihar, Nawlu Colony, Near Metro Station, Ballabgarh-04, Faridabad (Haryana)

Ph.: 0129- 2240123, 9810204678 Cell : +91- 9810262166, +91- 9871175777

E-mail : info@maanmachinetools.com, Website : maanmachinetools.com

skype : k.s.maan







# *Rotary Die Cutting with Slitting*

**RDC-30**



▲  
**MAAN MACHINE TOOLS**



## Rotary Die Cutting with Slitting

**RDC-30**

RDC-30 Slitting machine with rotary die-cutting function is a new product. it equipped with high accurate rotary die-cutting system. This machine is suitable for blank adhesive labels. .DIE CUTTING & slitting can be finished in one process. It has the function of automatic meter Length counting. automatic stop. web guiding by E+L (Germany), The machine has the characteristic of compact structure. fast speed. high efficiency. easy operation. accurate slitting and steady running etc.

### Technical Specification

#### Model- RDC-30

- Max Web Width: 320 mm
- Max Unwind Dia: 500 mm
- Max Rewind Dia: 500 mm
- Pneumatic Unwinder, Shaft with 3" dia.
- Pneumatic Rewinder, 2 shafts with 3" dia.
- Upgraded air shafts at unwinder / rewinder with centralized air supply mechanism which requires no air gun
- Web Aligning system by E+L (Germany)
- Single Die Cutting Station
- Min/Max Repeat Length per Teeth: 60T-160T
- Max Die-Cutting Speed: 60M/ Min
- Waste Rewind
- Max Slitting Speed: 70M/ Min
- Min Slitting Width: 25 mm
- Max Slitting Width: 300 mm
- Slitting accuracy : +/- 0.10 mm
- Waste Suction blower
- 4 Sets (Upper & Lower Knives Set) Movable Rotary Slitting Cutters for Slitting
- Allen Bradley Make Ac Drive for Speed Control
- Rotational Panel for easy operation in Desired position / direction
- Pre-set Label Counting by using Label Sensor / Length counter with setting of auto stop when the count is reached
- Tension Controlled By using Pneumatic Brake on UNWIND & Pneumatic CLUTCH on Rewind.
- Pneumatic Air supply needed 6 Bar
- Power: Approx 2.0 kw, 415V, 50Hz, 3 Phase
- Dimensions (in INCH): 61 (L) x 41 (W) x 59 (H)
- Weight: Approx 700 kg

**Make MMT**

*Note : Specifications and features are subject to change without notice.  
\*approximate speed depending upon coating & material.*



**MAAN MACHINE TOOLS**

I 19, Krishna Vihar, Nawlu Colony, Near Metro Station, Ballabhgarh-04, Faridabad (Haryana)

Ph.: 0129- 2240123, 9810204678 Cell : +91- 9810262166, +91- 9871117577

E-mail : info@maanmachinetools.com, Website : maanmachinetools.com

skype : k.s.maan





## *Rewinder for Laser/Inkjet Marking*

**RWI-30**



▲  
**MAAN MACHINE TOOLS**





## Rewinder for Laser/Inkjet Marking

**RWI-30**

RWM-30 Label inspection / Rewinder for Laser/Inkjet Marking is an essential machine for label printing, die-cutting units, which is used for inspecting the quality of printing, die-cutting and also used for laser / Inkjet marking systems, It has Automatic meter-counting, label-counting system.

### Technical Specification

#### Model- RWI-30

- Max Web Width: 300 mm
- Max Unwind Dia: 400 mm
- Max Rewind Dia: 400 mm
- Pneumatic Unwinder shaft with 3" dia driven by brake
- Pneumatic Rewinder shaft with 3" dia driven by clutch
- Upgraded air shafts at unwinder/rewinders with centralized air supply mechanism which requires no air gun
- Max Speed: 65 M/ Min
- Rotational Operating Panel for easy operation in Desired position / Direction
- Ac Drive for Speed Control
- Allen-bradley HMI (Touch Panel) & PLC is used to get accurate results for quality productivity
- Pre-set Label Counting by using Label Sensor / Length counter with setting of auto-stop when the count is reached.
- It can run with close loop / open loop also.
- Marking bed / Inspection bed area is 300mm x 300mm
- Tension controlled by using Pneumatic Brake & Pneumatic Clutch
- Clutch / Brakes, each placed respectively on unwind & Rewind shafts
- Weight: Approx 500 kg
- Power: Approx 2.0 kw, 415V, 50Hz, Three Phase
- Pneumatic Air supply needed 3 Bar Pressure max
- Dimensions (in INCH): 65 (L) x 36 (W) x 60 (H)

**Make MMT**

*Note : Specifications and features are subject to change without notice.*

*\*approximate speed depending upon coating & material.*



**MAAN MACHINE TOOLS**

I 19, Krishna Vihar, Nawlu Colony, Near Metro Station, Ballabhgarh-04, Faridabad (Haryana)

Ph.: 0129- 2240123, 9810204678 Cell : +91- 9810262166, +91- 9871175777

E-mail : info@maanmachinetools.com, Website : maanmachinetools.com

skype : k.s.maana





# *Rewinder / Inspection machine*

## **RW-50**



▲  
**MAAN MACHINE TOOLS**



## Rewinder / Inspection machine **RW-50**

### Technical Specification

NO LUBRICATION is required.

#### Model- RW-50

- Web Width: 500 mm / 20"
- Unwind Dia: 600 mm / 24"
- Rewind Dia: 600 mm / 24"
- Min. Slitting Width : 25 mm
- Min Material thickness : 40 micron
- **Speed : 400 Mtrs / Min.**
- Upgraded air shafts at unwind / rewind with centralized air supply mechanism which requires no air gun
- Unwind Core Dia. : 3"
- Rewind Core Dia. : 3"
- Ac Drive Main : 5hp / 3.75kW
- Ac Brake Motor : 5hp / 3.75kW x 1 nos
- Waste Trim Blower : 0.5 hp / 0.37kW
- Free margin Control : By using web Edge Guide System
- Touch Screen Interface for easy Operations
- Touch Screen and PLC by Allen Bradley.
- Unwind Tension Control : Manually by using Pneumatic Brake System
- Rewind Tension Control : Manually by using Pneumatic Clutch System
- Air Requirements : 6-8 Bars.
- Power Requirements : 415Vac 3-Phase ( 4.5 kW )
- Weight: Approx 600 kgs (approx)
- Machine Dimensions (in Inch): 56 (L) x 66 (W) x 53 (H)

Note : Specifications and features are subject to change without notice.

\*approximte speed depending upon coating & material.



# MAAN MACHINE TOOLS

119, Krishna Vihar, Nawlu Colony, Near Metro Station, Ballabhgarh-04, Faridabad (Haryana)

Ph.: 0129- 2240123, 9810204678 Cell : +91- 9810262166, +91- 9871175777

E-mail : [info@maanmachinetools.com](mailto:info@maanmachinetools.com), Website : [maanmachinetools.com](http://maanmachinetools.com)

skype : k.s.maana







*Wide-Web Hologram Soft Embossing*  
**WSHEM-80/100**



▲  
**MAAN MACHINE TOOLS**



## Wide-Web Hologram Soft Embossing WSHEM-80/100

### Technical Specification

NO LUBRICATION is required.

Model	WHSEM-80	WHSEM-100
Web Width	800 mm./ 30"	1000 mm / 40"
Unwind Max. Dia.	700mm.	800mm / 31"
Rewind Max. Dia.	700mm.	800mm / 31"
Unwinding System	Tension controlled by auto tension system & Pneumatic Brake	
Rewinding System	Tension controlled by auto tension system & Pneumatic Clutch	
Pre Heating Roll	1 nos (with Thermal fluid For Uniform Heating in full length)	
Preheat Heater	5kW (415vac)	6kW (415vac)
Min. Film Thickness	12 micron	
Chilling Roll	1 nos (Chiller Required Sold separately)	
Unwind Core Internal Dia.	76mm/3"	
Rewind Core Internal Dia.	76mm/3"	
Max. Speed (Mtrs/Min.)	40-50 Mtrs/min. (Depend on film and coating done)	
AC Drive 3Phase	5 hp / 3.75 kW (1 nos)	3 Hp / 2.2 kW (2 nos)
AC Motor 3Phase	5 hp / 3.75 kW (Geared Motor) (1 nos)	3 Hp / 2.2 kW (Geared Motor) (2 nos)
Loading / Unloading	Manually on Pneumatic expandable shafts	
Unwinding tension	Manually by using Pneumatic Brake.(Make MMT)	
Rewinding tension	Manually by using Clutch on Arms (MMT)	
Free Margin Control	By using web Edge Guide System (Make E+L/BST) (Extra chargeable)	
User Interface	By using touch panel with Plc control for best results and accuracy	
Compressed Air Required.	6-8 Bar	
Power Requirements	415V AC 3Phase (9 Kw)	415V AC 3Phase (10.5 kW)

Note : Specifications and features are subject to change without notice.

© = extra price will be charge for these



# MAAN MACHINE TOOLS

I 19, Krishna Vihar, Nawlu Colony, Near Metro Station, Ballabhgarh-04, Faridabad (Haryana)

Ph.: 0129- 2240123, 9810204678 Cell : +91- 9810262166, +91- 9871175777

E-mail : info@maanmachinetools.com, Website : maanmachinetools.com

skype : k.s.maan





since 1987

*Core Cutter*  
Pvc & Paper core  
**CC**



**MAAN MACHINE TOOLS**



# Core Cutting Machine

## For Pvc & Paper Core

50 to 150 mm Dia (50, 75, 100, 125, & 150 mm  $\phi$ )  
Core Cutter is a Versatile & compact machine.  
Its cuts core at very high speed within a variation of  $\pm 0.5$  mm  
Suitable for Plastic Core, Paper Core, Aluminum Core etc.



since 1987



Some Samples



### Technical Specification

Model	CC
Core Diameter	3 & 6 Inches.
Core material	Paper & Pvc.
Min. core cut size (PVC Core)	5mm.
Min. core cut size (Paper Core)	15mm.
Motor	2 Nos. (0.75kW & 0.09kw Geared Motor)
Max Cutting Variation.	$\pm 0.50$ mm.
Core Rotation	by using Geared Motor.
Power Requirements	415V AC 3 phase (1.10 kW)
Machine Dimensions (LxWxH)	(59" x 22" x 45") these dimensions are in INCHES.
Weight (kgs)	200 kg (Approx)

Note : Specifications and features are subject to change without notice.

\*On extra charge according to Quantity etc.



# MAAN MACHINE TOOLS

I 19, Krishna Vihar, Nawlu Colony, Near Metro Station, Ballabhgarh-04, Faridabad (Haryana)

Ph.: 0129- 2240123, 9810204678 Cell : +91- 9810262166, +91- 9871175777

E-mail : [info@maanmachinetools.com](mailto:info@maanmachinetools.com), Website : [maanmachinetools.com](http://maanmachinetools.com)

skype : k.s.maam





since 1987

# *Narrow-Web Hologram Embossing Machine*

**NWH-50A**



**MAAN MACHINE TOOLS**

The Machine produces Hologram required for Counterfeiting / Security Printing Hologram Lables / Narrow Web Hologram Film etc.

2D / 3D Hologram to E-beam Hologram embossing can also be done depending upon Masters



since 1987

## Narrow-web Hologram Embossing Machine

NWH-50A

Samples



### Technical Specification

Model	NWH-50A
Max. Print area	510 mm.
Max. Unwind Diameter	400 mm.
Max. Rewind Diameter	400 mm.
Substrates to be print	Polyester,Bopp, etc.
Thickness of substrate	16 micron to 150 micron.
Speed Max. (with using Du Pont Sleeves)	35 - 45 Mtrs / min
Unwind / Rewind Core dia.	76mm / 3"
Heater	4 kW x 1 nos. (415vac)
AC Drive	3 Hp /1.5 kW & 1 Hp (1 no's each)
AC Motor	2 Hp /1.5 kW geared Motor & 1 Hp / 0.75kW Geared Motor / (1 no's each)
winding Tension	AUTO TENSION Control System with Magnetic Clutch. (Make E+L,Etc).
Unwinding Roll	AUTO TENSION Control System with Magnetic brake. (Make E+L,Etc).
Counting System	By using PLC (having both option of SHEET/METER counting).
Control System	By using user friendly TOUCH Panel with PLC control.
Web Guiding System	Web-Edge Guiding System (Make E+L,Etc).
Embossing Pressure Digital	Embossing Pressure is digitally controlled.
Panel Margin Adjustment	Motorized with fine adjustment.
Air Requirements	6-8 Bar.
Power Requirements	415V AC 3 phase (7.50 kW)
Machine Dimensions (LxWxH)	(") these dimensions are in INCHES.
Machine Weight (Kg)	

Note : Specifications and features are subject to change without notice.

\*On extra charge according to Quantity etc.

**NO LUBRICATION is required in our All Machines.**



# MAAN MACHINE TOOLS

I 19, Krishna Vihar, Nawlu Colony, Near Metro Station, Ballabgarh-04, Faridabad (Haryana)

Ph.: 0129- 2240123, 9810204678 Cell : +91- 9810262166, +91- 9871175777

E-mail : info@maanmachinetools.com, Website : maanmachinetools.com

skype : k.s.maana







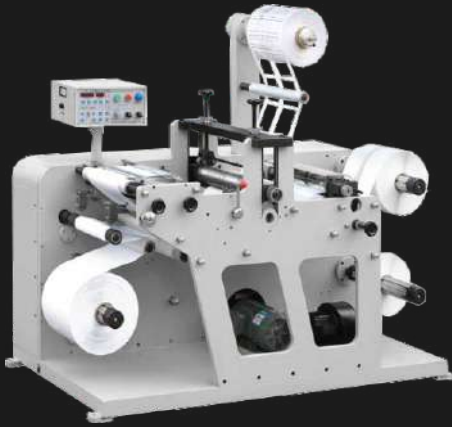
since 1987

# *Rotary Die Cutting with Slitting*

**RDK-320G**



**MAAN MACHINE TOOLS**



# Rotary Die Cutting with Slitting

## RDK-320G

RDK-320G Slitting machine with rotary die-cutting function is a new product. it equipped with high accurate rotary die-cutting system. This machine is suitable for blank adhesive labels. Die-cutting.laminating(option).slitting can be finished in one process. It has the function of automatic meter counting. automatic stop. web guiding by photocell, The machine has the characteristic of compact structure. fast speed. high efficiency. easy operation. accurate slitting and steady running etc.

## Technical Specification

### Model- RDK-320G

- Max Web Width: 320 mm
- Max Unwind Dia: 500 mm
- Max Rewind Dia: 480 mm
- Pneumatic Unwinder, Shaft with 3" dia driven by dual magnetic powder brake
- Pneumatic Rewinder, 2 shafts with 3" dia driven by dual magnetic powder clutch
- upgraded air shafts at unwinder/rewinders with centralized air supply mechanism which requires no air gun
- 2 Taiwanese Edge Sensors for web guiding.
- Single Die Cutting Station
- Min/Max Repeat Length per Teeth: 60T-160T
- Max Die-Cutting Speed: 60M/ Min
- Waste Rewind
- Max Slitting Speed: 100M/ Min
- Min Slitting Width: 18mm
- Max Slitting Width: 300mm
- Slitting accuracy : +/- 0.10 mm
- Waste Suction blower
- 8 Sets (Upper & Lower Knives Set) Movable Rotary Slitting Cutters for Slitting
- French Schneider Make Inverter Drive for Speed Control
- Rotational Panel for easy operation in Desired position / direction
- Pre-set Label Counting by using German Sensor / Length counter with setting of auto slowdown and stop when the count is reached
- Manual unwind and Rewind tension control setting on the main control panel with regulator and Ampere meter powered by 3nos.
- Magnetic power Cluth / Brakes, each placed respectively on unwind & each of the 2 Rewind shafts
- Pneumatic Air supply needed 6 Bar Pressure max
- Power: Approx 2.0 kw, 220V, 50Hz, Single Phase
- Dimensions (in mm): 1600 (L) x 900 (W) x 1300 (H) mm
- Weight: Approx 700 kgs

Make Chinese

Note : Specifications and features are subject to change without notice.  
\*approximate speed depending upon coating & material.

**MAAN MACHINE TOOLS**

I 19, Krishna Vihar, Nawlu Colony, Near Metro Station, Ballabhgarh-04, Faridabad (Haryana)

Ph.: 0129- 2240123, 9810204678 Cell : +91- 9810262166, +91- 9871175777

E-mail : info@maanmachinetools.com, Website : maanmachinetools.com

skype : k.s.maan





since 1987

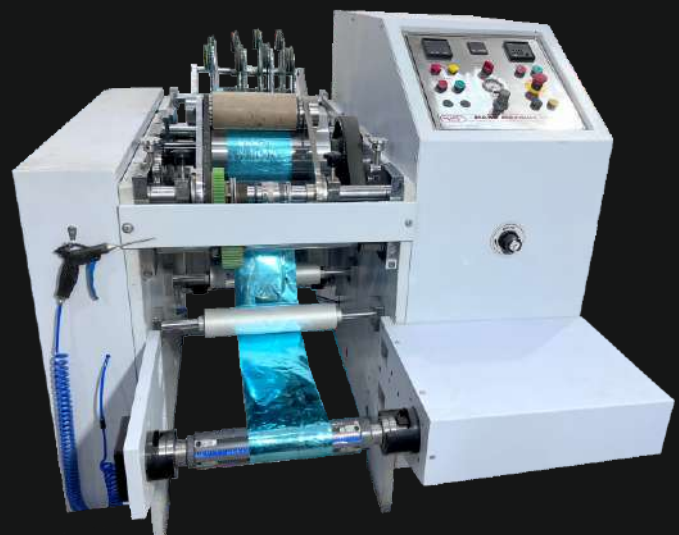
# *Hologram Transfer Machine or Hologram Applicator Machine*

## **HLHTM-30A/50A**

**New**



**New**



**Specially Designed For Aluminum Foil with VMCH Coating, etc**



# **MAAN MACHINE TOOLS**



These Machines are designed to transfer the Embossed Holographic material to the material to be used / required. i.e. on paper, aluminum foil, polyester or as per customer requirement in roll to roll form.



since 1987

# HLHTM-30A/50A

**Specially Designed For Aluminum Foil with VMCH Coating, etc**

Some Samples



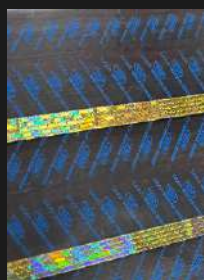
On Bidi Paper



On Blister film



On Aluminum foil



On polyester



On Lami Tube



1mm For cigrette

## Technical Specification

**NO LUBRICATION** is required. Best Suitable for Pharmaceuticals and Hygienic requirements.

Model	HLHTM-30A	HLHTM-50A
Max. Unwind Web Width	300mm / 12 Inches	500mm / 20 Inches
Max. Unwind Reel Dia.	600mm / 24 Inches	800mm / 32 Inches
Max. Rewind Reel Dia.	600mm / 24 Inches	800mm / 32 Inches
Hologram Strip Unwind Arms	4 nos	6 nos
Polyester Waste Rewind Arm	4 nos / 1 Single Core	6 nos / 1 Single Core
<b>Silicon Pressure Roll</b>	1 nos	
<b>Chilling System</b>	1 nos (Specially Designed For Aluminum Foil with VMCH Coating)	
Heating Roll	3kw (1 nos)	5kw (1 nos)
Unwind & Rewind Reel Core Inner Dia.	76mm / 3"	76mm / 3"
Drive AC	3hp/2.2kW (1 nos)	5hp/3.75kW (1 nos)
Motor AC (Geared Motor)	3hp/2.2kW Geared Motor	5hp/3.75kW Geared Motor
Speed Max.	70Mtrs/Min (Depend on material)	
Unwind tension	By Pneumatic Brake (Auto Tension Control System Optional & Sold Separately)	
Rewind tension	By Pneumatic Clutch (Auto Tension Control System Optional & Sold Separately)	
Loading	Manually on Pneumatic Core holding System	
Unloading	Air Expandable Shaft (600mmDia) & Drum Winding (300mm Dia.)	
Web Aligner	By Edge Guide System (Make E+L/BST)	
Length Counting	Digital Preset Auto-Cut Length Counting System	
Air Required	8 Bar / 120psi	
Power Requirements	6 kW(Approx) , 415Vac / 3Phase	9 kW(Approx) , 415Vac / 3Phase
Dimensions (in INCHES)	L-85 x W-55 x H-55	L-102 x W-75 x H-55

**Water Chiller for machine not included with machine Buyer has to purchase separately**

Note : Specifications and features are subject to change without notice.

\*approximate speed depending upon coating & material.



# MAAN MACHINE TOOLS

119, Krishna Vihar, Nawlu Colony, Near Metro Station, Ballabhgarh-04, Faridabad (Haryana)

Ph.: 0129- 2240123, 9810204678 Cell : +91- 9810262166, +91- 9871175777

E-mail : info@maanmachinetools.com, Website : maanmachinetools.com

skype : k.s.maana

